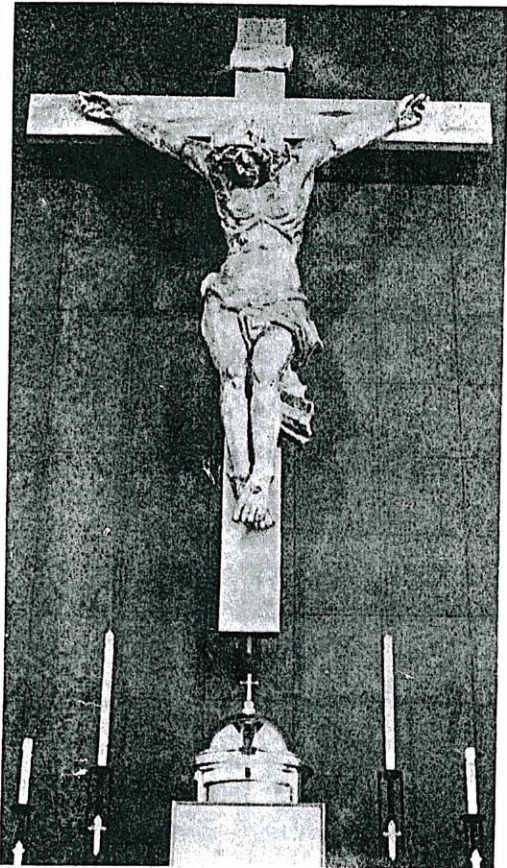




*Parish of St. Bernadette. Mt. Wellington.*

**DIRECT GIVING CAMPAIGN**

SEPT.—OCT. 1961.



## *These Pages are Dedicated . . .*

To the Honour and Glory of God.

To St. Bernadette, Guardian and Protector of this Parish.

We further dedicate this booklet to the many good and generous men and women who are giving themselves in toil, prayer and much sacrifice for the success of this present campaign.

To the future that the toil of today may yield the harvest of tomorrow.

### **PRAYER AT START OF MEETING . . .**

Come, O Holy Ghost, fill the hearts of Thy faithful and enkindle in them the fire of Thy love.  
Send forth Thy spirit, and they shall be created.

And Thou shalt renew the face of the earth.

O God, Who by the light of the Holy Ghost, didst instruct the hearts of the faithful, grant that in the same spirit we may be truly wise, and ever rejoice in His consolation. Through Christ our Lord. Amen.

Direct, we beseech Thee, O Lord, our actions by Thy Holy inspirations and carry them on by Thy gracious assistance, that every prayer and work of ours may always begin from Thee, and by Thee be happily ended. Through Christ our Lord. Amen.

Most Sacred Heart of Jesus . . . Have Mercy on us.

Immaculate Heart of Mary . . . Pray for us.

### **PRAYER AT END OF MEETING . . .**

Lord Jesus,  
Teach me to be Generous,  
Teach me to serve You as You deserve to be served,  
To give without counting the cost,  
To fight without heeding the wounds,  
To toil without seeking rest,  
To labour and to seek for no reward,  
Save that of knowing that I do Thy Holy Will.

—St. Ignatius.

*His Grace speaks to us . .*



Bishop's House,  
Ponsonby,  
Auckland.



**TO THE PARISH PRIEST AND  
PARISHIONERS OF  
MOUNT WELLINGTON**

I offer you a special welcome to the circle of the parishes that have taken up the Direct-Giving scheme for the orderly, prudent and dignified care of your Parish finances. You will find it, let me assure you, rewarding, as they have done, for your parochial responsibilities and your personal Catholic life.

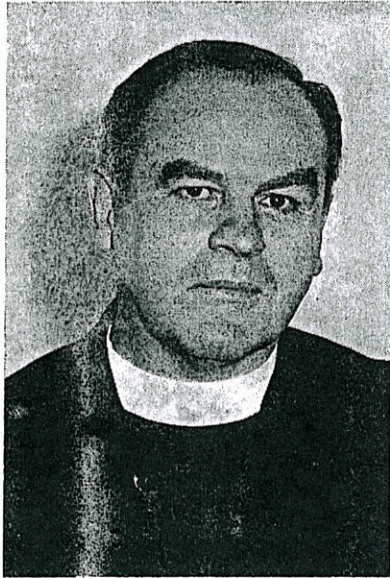
Let me felicitate you on choosing this method at the beginnings of your parish for it means you will form and grow up with your own traditions and in that take your parish as a family home to which you will give your love and loyalties.

The Lord give you and your children precious gifts, such as His Sacrifice of Worship and Sacraments, Teaching and Commandments, through the Church in which he rules and sanctifies us; the Church in turn comes to us in great measure through our parish. In gratitude you take it to your heart and build it up lovingly.

May your future and all of you in it be blessed.

*Jameson Liston*

Bishop of Auckland.



*A word from  
our Parish Priest*

St. Bernadette's Presbytery,  
27 Bailey Rd.,  
MT. WELLINGTON.

My Dear Parishioners,

The Parish of Mt. Wellington was established by His Grace, Archbishop Liston, in February of this <sup>1961</sup> year. A suitable Mass centre was found near the four acre property provided by the Archbishop. The first Holy Mass was celebrated in the parish on Sunday 12th March at the home of Mr. and Mrs. T. Wackrow, 49 Commissariat Rd.

A house on the parish property in Bailey Rd. has since been renovated to become the presbytery. Week day Mass was offered there for the first time on Wednesday, 5th July. In August, the Hillsborough Construction Company began work on the parish church of St. Bernadette, planned to be completed by Easter 1962. Later, there is proposed a parish school on the spacious grounds.

As a new parish with fresh traditions to establish, a responsible group of parishioners agreed to accept the National Fund Raising System which has already proved its worth in many parishes as a means of acquiring the necessary finance for our own parish projects.

Under the patronage of Our Lady of Lourdes and St. Bernadette, with our united effort and sacrifices, let us go forward in God's Name.

Yours sincerely in Christ,

*H. Jillings*

## *Our Heritage*

The history of the Catholic Church in the Panmure district began about the year 1840. Initially a mission station headed by Fr. Garin was established to care for the spiritual needs of the soldiers of the Imperial Army, and the few settlers in the district. Fr. Fynes the first parish priest of Panmure-Howick, was appointed by Bishop Pompallier in 1852. He was followed by Fr. Walter McDonald who became a familiar figure to every resident as he rode about Ellerslie, Panmure and Howick on his horse Shamrock. His death in December, 1899, was mourned by people of all denominations, thousands of whom attended his funeral.

In 1904 another milestone was laid in the Catholic life of Panmure when the Sisters of Our Lady of the Mission arrived to establish a convent. They began by teaching a mere handful of pupils. Today the parish school roll numbers nearly five hundred children.

In view of the continued growth of the Panmure-Howick district, twelve<sup>(1969)</sup> years ago Panmure was established as a separate parish by His Grace Archbishop Liston with Fr. S. Gardiner as parish priest. Fr. Gardiner and his assistants Fr. D. Blake, and Fr. P. Gray have until this year zealously cared for the spiritual needs of the Mt. Wellington area.

Thankful to Almighty God for the blessings of the past, we humbly ask His help for further favours. Now we can commence our heritage on a sound basis with the parishioners acting as one parish family. Under the guidance of Our Lady of Lourdes and St. Bernadette we cannot fail to progress.



**Mr. T. WACKROW**  
General Chairman

## *Why have this Campaign?*

WE REQUIRE a planned giving programme

Because the needs are great and of the utmost importance. If the challenge of the responsibilities of our Parish of St. Bernadette is to be accepted we must budget to meet the following needs:

### **FOR OURSELVES:**

- Build and furnish a new Church — £15,000.
- To work towards building a new School — £10,000.
- Lay out Grounds — £5,000.

### **FOR OTHERS:**

- Seminary Appeal: Our Parish' contribution to the education of Priests.
- Peter's Pence: A world-wide collection for Good Works by the Holy Father wherever the need is greatest.
- Propagation of the Faith: To spread the Gospel of Christ to the utmost ends of the earth.
- Maori Mission Appeal.
- Contributions to Diocesan Appeals and Levies, which include —  
Special Appeals or Levies for extraordinary purposes  
Catholic Education

### **BUT our greatest need lies in Spiritual Values**

- Giving is an expression of spiritual maturity. The distinguishing mark of the genuine follower of Christ is that he must be ready to sacrifice. Our Lord said so.
- The degree of our approach to **SPIRITUAL VALUES** will deepen our own awareness of **OUR OWN NEED TO GIVE.**
- It is essential for our own good, for our own joy and peace of mind that we give. Mean people are never happy, generous people radiate joy. Giving is a normal expression of human life. A father gives, a mother gives, the nurse, the soldier and the patriot give — the Priests, the Brothers and the Sisters give their whole lives — and everything that any of us has is given by God.
- In answering the challenge to sacrificial giving we shall not only be meeting the needs of the Parish, but we shall be meeting the needs of our spiritual life.

# *What is this Campaign?*

The Canvass in our Parish of St. Bernadette is to raise funds for the building needs of the Parish, and to meet our other expenses.

We will seek "Pledges" or promises from every Catholic wage earner. These pledges should be truly generous gifts, for a period of 150 weeks commencing on Sunday, 15th October, 1961.



Mr. G. QUINN  
Canvass Committee Chairman

Our object is to have EVERY Catholic Family committed according to its ability to give. The decision as to what the gift shall be remains with the giver. Remember, this is nothing more than a timely realisation by Parishioners of their part in the maintenance of God's work, and what their Faith really means to them.

## **WHO WILL BE CANVASSED?**

All Catholic Families and income receivers in the Parish.

## **WHERE WILL THE CANVASSING TAKE PLACE?**

Canvassing will be done in your home. No canvassing is carried out by mail, telephone, or in groups.

## **WHO WILL CANVASS?**

A fellow-parishioner who has already made his pledge will help you arrive at the amount of your own. He will have personally selected your name to visit. You will find him pleased to advise you, and you will benefit by his preparation for his self-chosen task. Remember also that he is giving of his time to make this call on you. Please make him welcome in your home.

## **WHAT DOES MY PLEDGE REPLACE?**

Your weekly pledge to the Combined Funds will incorporate the following:

- Door Collection
- Annual Appeal
- Second Collection.

All Diocesan Appeals and Levies such as — Peter's Pence, Seminary Appeal, Maori Mission Appeal, Propagation of the Faith, Gala Days, bazaars, raffles and all other such functions, except where support is felt to be optional and not obligatory.

The First Collection, Christmas and Easter Dues, and School Fees will remain as before. Payment of weekly pledges will be facilitated by the weekly offering envelopes taken up at the Second Collection.



Mr. M. COLLINS  
Initial Pledges Chairman

## Why Pledge?

- ★ We need to commit ourselves, to make a decision which otherwise we would tend to put off. The making of a pledge is the making of a DECISION.
- ★ A decision made by way of a pledge is more likely to be a carefully considered, properly thought-out decision.
- ★ A system of offering envelopes provides a way of carrying out and keeping oneself up to such a decision.
- ★ A pledge is a forthright expression of a positive attitude towards the responsibility of our Faith.

- ★ There is no doubt that planned giving does result in a higher personal standard of giving; because of this, planned giving brings greater satisfaction to the giver.
- ★ If we are prepared to commit ourselves beyond our present resources for material things, why do less than this for the much more important spiritual things.
- ★ The system of pledging enables the Parish to have all the advantages of planning; that one would never consider denying one's own affairs.
- ★ Pledging in an every-family Canvass aligns us with the majority of the other families and enables our parish as a whole, both by the amount raised and by the fact of unified and effective giving, to demonstrate its unity of purpose in carrying on the work of the Church to the greater Glory of God.

ABOUT YOUR PLEDGE CARD— Here is a sample of the pledge card to be used in our Canvass. You will note that it says "We will TRY to give"—it is a statement of intention. It may be revised if circumstances make this desirable or necessary. It is in no way a legal commitment—but it is, we trust, something which results from your careful, conscientious, prayerful consideration.

Name .....

No. ....

Address .....

To Help Provide for  
**Parish of St. Bernadette**  
 DIRECT GIVING CAMPAIGN  
 I/We will try to give

WEEKLY
£

Weekly for  
150 weeks

Beginning on Sunday, 15th October, 1961.

For a  
Total of

TOTAL
£

Signature .....

Date.....

Address .....

(It is understood that this gift may be revised or cancelled should circumstances make it necessary).



# Facts about your Pledge

## YOUR PLEDGE

means that YOU, whether a Family or an individual income receiver, promise to TRY to give a stated regular weekly amount. We do not seek cash gifts in a lump sum, but weekly amounts over 150 weeks.

## EQUAL AMOUNTS WILL NOT BE ASKED

from all families as this will be both impossible and unfair. To some families £1,000 over 150 weeks would be equally sacrificial as a lesser amount to others. We are seeking EQUALITY OF SACRIFICE — NOT EQUALITY OF GIVING.



Mr. I. BALDERSTON →579-690  
Special Pledges Chairman

## THE "RIGHT" FAMILY GIFT

is one so generous that it cannot be paid fully at the one time. For this reason weekly dated envelopes will be supplied to all families to be placed in the collection plate during Mass.

## NO ONE WILL BE TOLD

what amount he "must" give. This is a decision that only the giver can reach; the challenge will be to each family to give as it is able.

## AS A GUIDE TO FAMILIES

let us consider giving on at least a "Tithing" basis or better. Tithing is giving God the first tenth of our income. Originating in early Biblical times, the practice of Tithing has continued to the present day. It is all a matter of placing our priorities in their correct perspective.

## OUR STANDARD OF GIVING

is as important to our spiritual well-being as our standard of living is to our material well-being . . . and the spiritual things are eternal.

## YOUR PLEDGE

is treated with confidence — it is not revealed without your consent.

### OUR LOVE OF GOD

Is it greater than our love of Material things?

### OUR WILLINGNESS TO SACRIFICE

Is it overshadowed by our natural selfishness?

### OUR FIDELITY IN PRAYER

Are we sincerely thankful in our prayers for God's gifts to us?

### OUR NEED TO GIVE

Have we given back to God in proportion to His Gifts to us?

### OUR INTEREST IN GOD'S CHURCH

Are we interested in the Church's Work?

### OUR RECOGNITION OF ITS NEEDS

Have we always honestly supported its needs?

### OUR METHOD OF MAKING OUR PLEDGE

Shall we make a casual gesture or really please God?

### OUR FINANCIAL ABILITY

Have we really been doing our utmost?



Mr. J. SILVEIRA  
Teams Chairman

## About Your Visitor . . .

Within the next few days a layman of our Parish will be calling upon you at home.

Please extend to him a welcome as a fellow-parishioner and make his task easier by inviting him in as a friend and listening thoughtfully to to what he has to say.

You will be interested to know these things about him—

- Already he will have pledged himself to give to the Parish an amount which he, after searching his own conscience, considers is a sacrifice.
- Believing in the Divine Mission of the Church and its work and of our personal need to give, he is sacrificing a good deal of his time as well.
- He is not coming to put any sort of pressure upon you but to give you an opportunity to share his positive giving experience.
- He has taken his visitation work seriously and has spent a great deal of time and thought in training and preparation.
- He has personally chosen each family he visits.
- He asks only that you give him your confidence and be willing to meet him with a mind open to the will of God.



SOME OF THE MEN WHO DISCUSSED THE CANVASS PLAN

- R BACK: ? T. Wackrow (glasses), N. Elliott, G. Wakefield, L. Klaas  
M. COLLINS, M. Blake, A. Lynch, Trev. Wackrow, J. Hogan, G. Q.  
M. Wackrow. 2nd Row: J Pryor.  
FRONT: Mr Kennedy, M. Edwards, J. Balderston, M. Silveira, S. Muldarry,

## *The Women's*

### *Point of View . . .*



Mrs. M. COLLINS  
Hostess Chairman

*Theresa*

We, the women of the parish, have been used to organising and running money-raising functions. But now we welcome the Campaign that we are embarking on as a much more efficient and definitely a more spiritual approach to our difficulties.

We realise that the inspiration of the Campaign is the call to sacrifice our time and resources.

The spiritual impact of this, if fully shared, will, we feel, bind our community closer together as a united Parish family. In doing this we will also be brought together in ties of Faith and Service to our Church.

With one great united effort we can accomplish the aims we have set ourselves. Perhaps because we are women, we tend to look ahead more and to try to provide for our children all the things we think they should have — and if you look at the plans that the Parish has for the future, you will see why we stand solidly behind our menfolk in the great venture they have set themselves.

With an assured Parish income and with great plans laid for the future we will be able to feel that we have played our part and have not been found wanting.

## *There are Two Seas . . .*

There are two seas in Palestine. One is fresh and fish are in it. Splashes of green adorn its banks. Trees spread their branches over it and stretch out their thirsty roots to sip of its healing water. Along its shores children play.

The River Jordan makes this sea with sparkling water from the hills. So it laughs in the sunshine. And men build their houses near to it and birds their nests; and every kind of life is happier because it is there.

The River Jordan flows on south into another sea. Here is no splash of fish, no fluttering leaf, no song of birds, no children's laughter. Travellers choose another route, unless on urgent business. The air hangs heavily above its waters and neither man nor beast nor fowl will drink. What makes this difference in these neighbouring seas? Not the River Jordan. It empties the same good water into both. Not the soil in which they lie; not the country round about.

This is the difference. The Sea of Galilee receives but does not keep the Jordan. For every drop that flows into it another drop flows out. The giving and receiving go on in equal measure. The other sea has no such generous impulse. Every drop it gets, it keeps. The Sea of Galilee gives and lives. The other sea gives nothing. It is called the Dead Sea.

There are two kinds of people in the world. There are two seas in Palestine.

## *Giving Can be of Two Kinds . . .*

### **TOKEN GIVING . . .**

So small that it  
Costs nothing —  
Means nothing —  
No sacrifice  
No spiritual value  
Is quickly forgotten  
Has only a negative impact upon  
the giver

### **SACRIFICIAL GIVING . . .**

Large and generous enough to  
  
Please God,  
  
Please the giver,  
  
Have a positive spiritual impact.

2nd Row: Jim Ryan

Front: Mr Kennedy, Michael  
Edwards, Ian Balderston,  
Michael Silvera, Sean  
Muldany, Edward  
Hennard.

L - R Back:

? Jerry Wackrow (Glasses)  
Norman Elliott, George  
Wakefield, Leo Klaassen,  
Michael Collins, Mervyn  
Blake, Arthur Lynch,  
Trevor Wackrow, John Hogan,  
Graham Quinn, Michael  
Wackrow